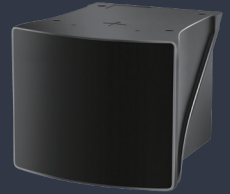













# Robin W

Wide FOV LiDAR



- 70m@10% detection range provides enhanced safety protection for high-speed lane merging and vehicle starting scenarios
- Blind area  $\leq 10\text{cm}$ , efficient perception of small and low objects, providing all-around 3D perception for the vehicle
- Automotive grade reliability and lifetime, using proven scanning architecture
- Ideal for wide-angle monitoring of intersections and pedestrian venues at mid-distance ranges

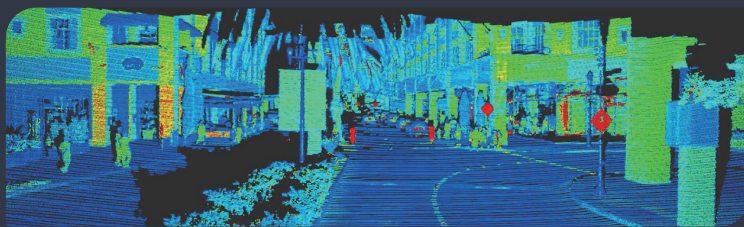
## Key Specifications

 0.1m~150m(70m@10%) Detection Range	 120°×70° FOV	 0.15°×0.36° Resolution(H×V)	 10~20FPS Frame Rate
 192lines Scanning Lines / Layers	 -40°C~85°C Operating Temperature	 IP67(body), IP69K(window) Water and Dust Protection	 905nm, Class1(IEC-60825) Laser
 85mm×104.8mm×106.7mm Dimension(H×W×D)	 800g Weight	 <7.2W Power Consumption	

## Applications

 ADAS/AD	 Smart City	 Highways	 Railways	 Ports	 Shipping	 Mining	 Robotics
--	---	---	---	--	---	---	---

## About Seyond



Seyond is a leading global provider of image-grade LiDAR technology, powering a safer, smarter and more mobile world across the automotive, intelligent transportation, robotics and industrial automation sectors. Founded in Silicon Valley with strategically placed research and manufacturing facilities across the globe, Seyond is crafting LiDAR solutions that elevate autonomous driving and fuel the advancement of smart infrastructure development.

## Contact Us

Sunnyvale, USA  
+01 (650) 963-9573  
160 San Gabriel Dr., Sunnyvale, CA 94086, U.S.A.

Frankfurt, Germany  
+49 6196 96988 01  
Frankfurter Str. 92, 65760, Eschborn, Germany

Suzhou, China  
+86 0512-67888711  
4F, Building 9A, 1F, Building 3A,  
Yangtze River Delta International R&D Community,  
Qinglonggang Road, Xiangcheng District, Suzhou

## Performance



Detection Range (Maximum)*	150m
Detection Range (10% Reflectivity)*	70m
Detection Range (Blind Area)	0.1m
FOV	120°×70°
Resolution*	0.15°×0.36°
Distance Accuracy	±2cm
Distance Precision	up to 1cm(1σ)
Scanning Lines / Layers*	192lines
Frame Rate*	10-20FPS

## Reliability



Water and Dust Protection	IP69K(window), IP67(body)
Operating Temperature	-40°C~85°C
Laser Wavelength	905nm
Laser Safety	Class1(IEC-60825)

## Electrical & Interface



Operating Voltage	9~34V DC
Power Consumption	<7.2W
Data Interface	1000BASE-T1 Automotive Ethernet (UDP, TCP)
Data Output	3D Points, Intensity or Reflectivity, Timestamp
Time Synchronization	NTP, PTP, gPTP

## Mechanical



Dimension (H×W×D)	85mm×104.8mm×106.7mm
Weight	800g

\*: Configurable. For more information, please contact Beyond.