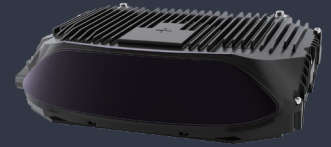













Falcon K1

Ultra-long Range LiDAR



- Unequaled combination of high resolution and ultra-long distance range
- Proven automotive grade reliability and lifetime, with over 300,000 units delivered
- Extensive coverage of complex intersections, and long stretches of roads, highway, and rail

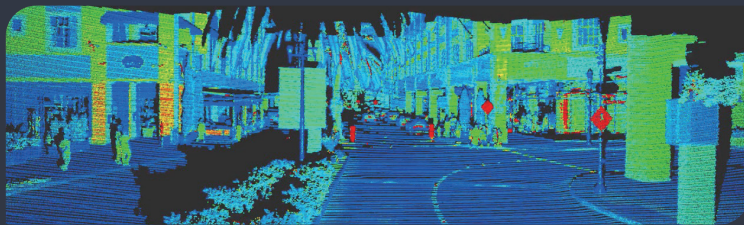
Key Specifications

 1.5m~500m(250m@10%) Detection Range	 120°×25° FOV	 0.1°×0.15°(1st 4.8°), 0.1°×0.1°(2nd 4.8°) ROI Resolution(H×V)	 10FPS Frame Rate
 150lines Scanning Lines / Layers	 -40°C~85°C Operating Temperature	 IP67(body), IP69K(window) Water and Dust Protection	 1550nm,Class1(IEC-60825) Laser
 58.9mm×228mm×149.6mm Dimension(H×W×D)	 1.7kg Weight	 30W Power Consumption	

Applications

 ADAS/AD	 Smart City	 Highways	 Railways	 Ports	 Shipping	 Mining	 Robotics
--	---	---	---	--	---	---	---

About Seyond



Seyond is a leading global provider of image-grade LiDAR technology, powering a safer, smarter and more mobile world across the automotive, intelligent transportation, robotics and industrial automation sectors. Founded in Silicon Valley with strategically placed research and manufacturing facilities across the globe, Seyond is crafting LiDAR solutions that elevate autonomous driving and fuel the advancement of smart infrastructure development.

Contact Us

Sunnyvale, USA
+01 (650) 963-9573
160 San Gabriel Dr., Sunnyvale, CA 94086, U.S.A.

Frankfurt, Germany
+49 6196 96988 01
Frankfurter Str. 92, 65760, Eschborn, Germany

Suzhou, China
+86 0512-67888711
4F, Building 9A, 1F, Building 3A,
Yangtze River Delta International R&D Community,
Qinglonggang Road, Xiangcheng District, Suzhou

Performance



Detection Range (Maximum)*	500m
Detection Range (10% Reflectivity)*	250m
Detection Range (Blind Area)	1.5m
FOV*	120°×25°
Non-ROI Resolution*	0.2°×0.24°
ROI FOV*	120°×9.6°
ROI Resolution (H×V)*	0.1°×0.15°(1st 4.8°), 0.1°×0.1°(2nd 4.8°)
Distance Accuracy	±2cm
Distance Precision	2cm(1σ)
Scanning Lines / Layers*	150lines
Frame Rate*	10FPS

Reliability



Water and Dust Protection	IP69K(window), IP67(body)
Operating Temperature	-40°C~85°C
Laser Wavelength	1550nm
Laser Safety	Class1(IEC-60825)

Electrical & Interface



Operating Voltage	9~32V DC
Power Consumption	30W
Data Interface	1000Base-T1 Ethernet (UDP,TCP/IP)
Data Output	3D Points, Intensity or Reflectivity
Time Synchronization	NTP, PTP, gPTP

Mechanical



Dimension (H×W×D)	58.9mm×228mm×149.6mm
Weight	1.7kg

*: Configurable. For more information, please contact Seyond.